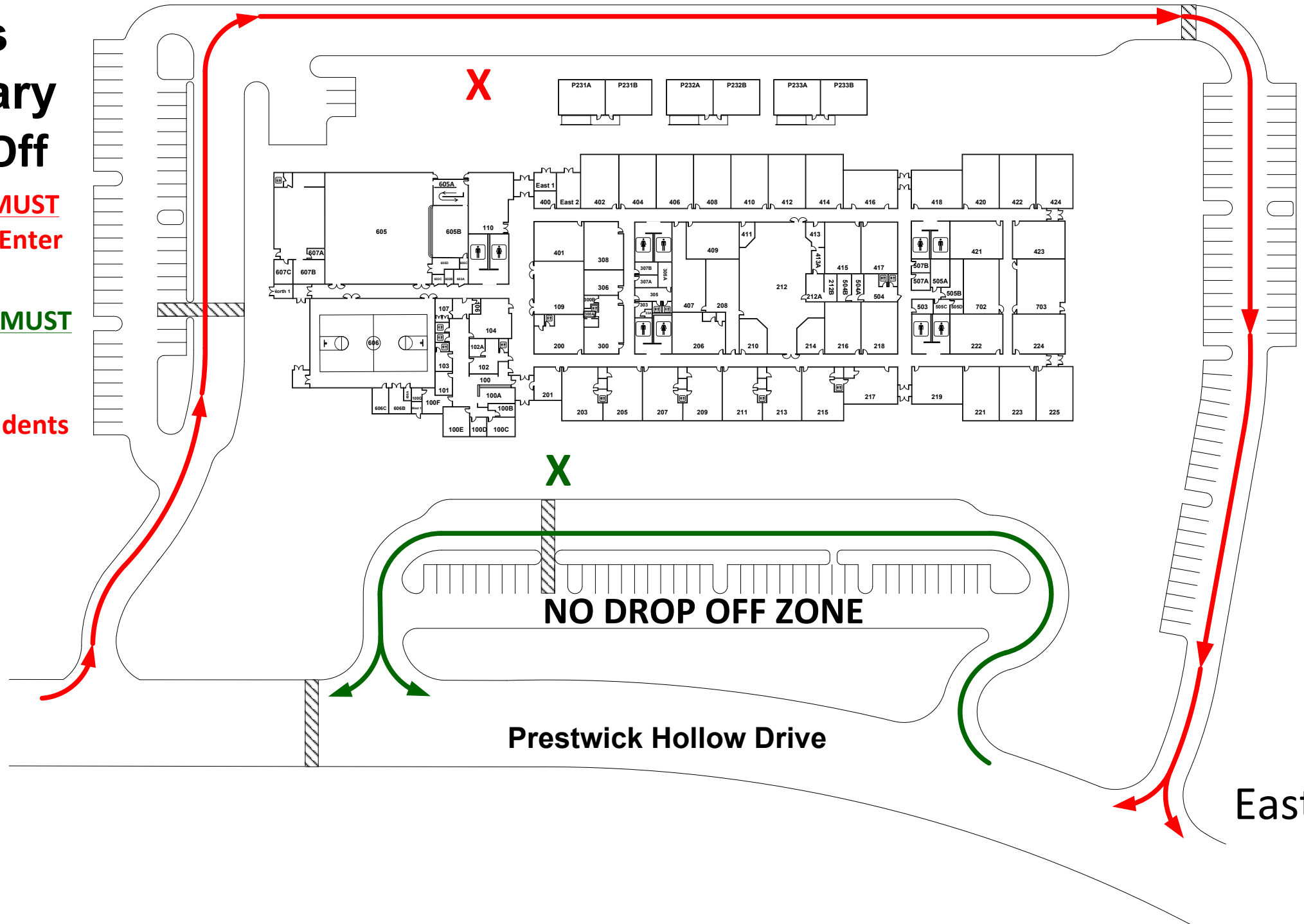


Hughes Elementary AM Drop Off

Eastbound traffic **MUST** use **BACK** carline. (Enter before crosswalk)

Westbound traffic **MUST** use **FRONT** carline.

Buses and PreK students drop off in back.



West

East

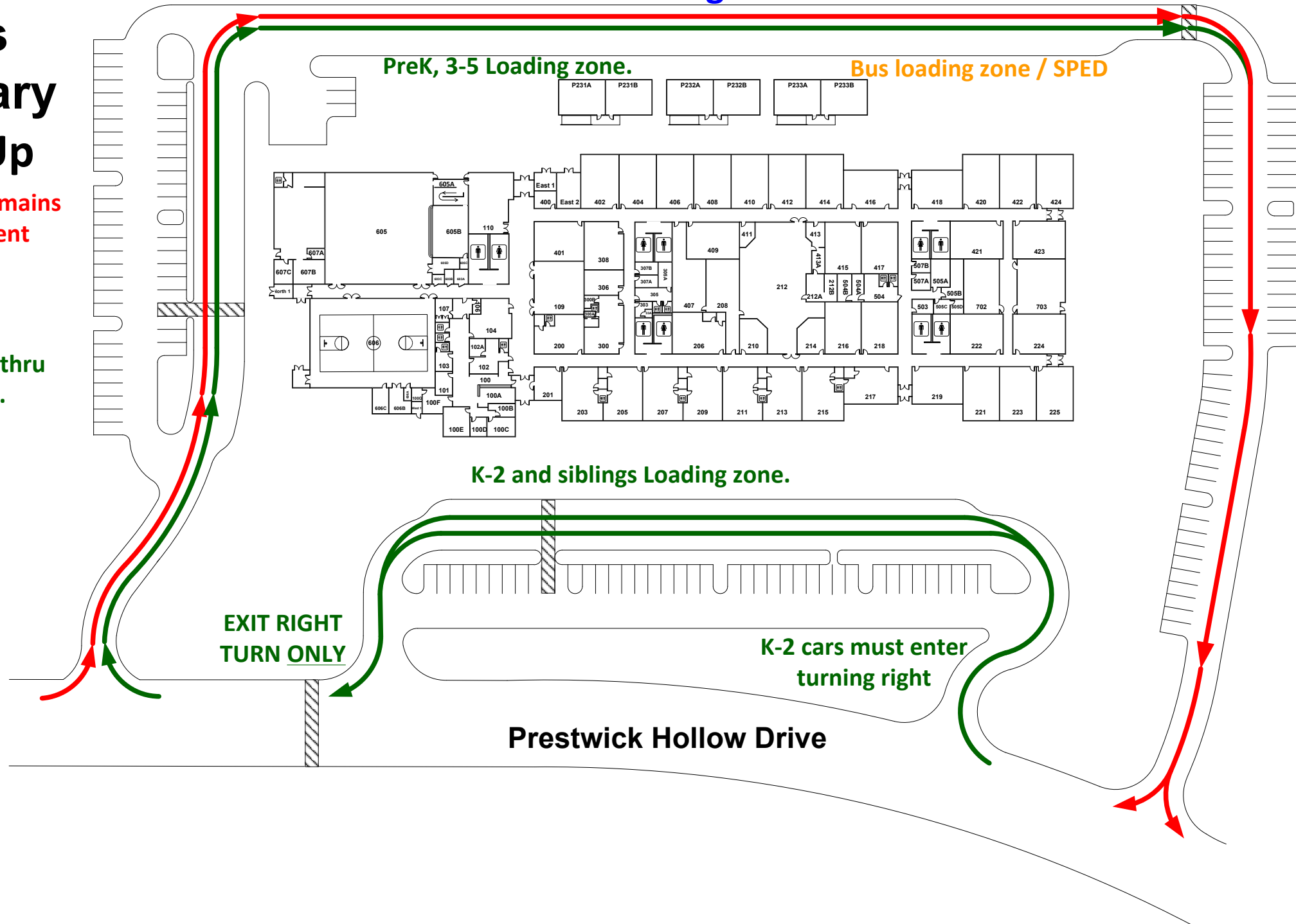
Parent Car Loading Zone

Hughes Elementary PM Pick Up

East bound traffic remains in left lane thru Student Pick-up Area.

West bound traffic remains in right lane thru Student Pick-up Area.

Busses will pick up students at the back entrance.



Hughes Elementary Walkers

- Walkers using South Crosswalk will be dismissed from Gym.
- Walkers using North Crosswalk will be dismissed from exterior Art Room door.
- K/1 students must be picked up by a parent/guardian/older sibling at the designated location (*) using their dismissal tag.
- Older sibling(s) walking home younger sibling(s) must have permission slip on file.

