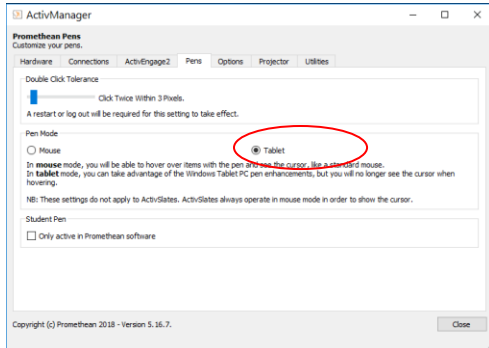


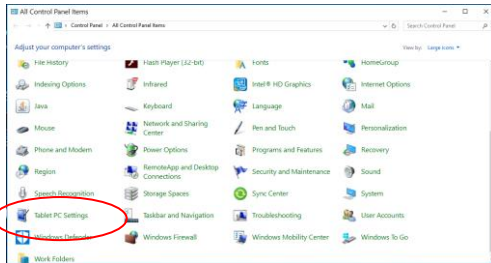


Set up for Tablet PC Setting

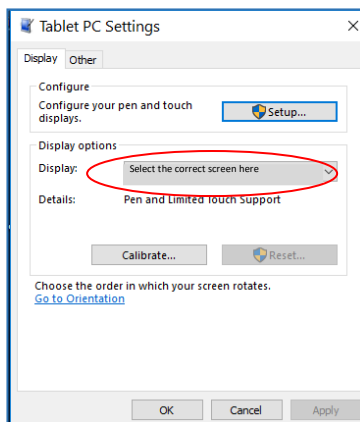
1. Right-click on the **ActivManager** icon on the taskbar.
2. Select **Control Panel**.



3. Select the **Pens** tab
4. Click on the button next to **Tablet**.
5. Click on **Close**.



6. Once the Tablet mode has been set up. Right-click on the **Start** button.
7. Click on **Control Panel**
8. Click on **Tablet PC Settings**



9. Click the down arrow and select the correct display for the touch screen.
10. Click on **Setup**.

11. A message will be displayed on the board/screen. Go to your touch screen and hold a finger to the board and wait until the board/screen comes back to the regular computer screen. This might take a while. **This should complete the process.**